

# Eco - efficient



Designed  
and Made in  
FRANCE

**3** YEAR  
Warranty

## S SERIES

The latest strainer pot pump for private,  
in-ground and above-ground pools



[www.pompe-pour-piscine.com](http://www.pompe-pour-piscine.com)

 **SIREM**



# S SERIES

## The Eco-efficient filter pump

Energy efficient and effective, the new S SERIES pool pump reduces your electricity bill by 40% compared to other pumps, which is really significant if you consider that the filter pump constitutes the largest energy consumer in a pool system.

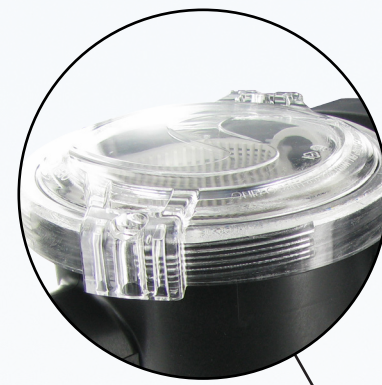
By choosing the S SERIES, you will considerably reduce your electricity bill for your pool; that means lower running costs for you and a decreased environmental impact. Its higher efficiency makes it an adapted and a high-performance solution for your filtration system.

Quiet and practical, the S SERIES is very easy to install for any new pool or reliably replaces an existing pump.

Designed  
and Made in  
FRANCE

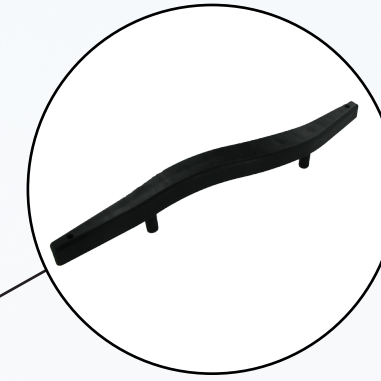
**3** YEAR  
Warranty

- REDUCED POWER CONSUMPTION
- HIGHER EFFICIENCY
- A VARIETY OF MODELS SO YOU CAN CHOOSE THE FLOW RATE THAT YOUR POOL NEEDS
- QUIET OPERATION THANKS TO THE SILENT BLOCK MOUNTING
- VISIBLE, EASY OPENING AND BASKET POSITIONING OF THE STRAINER POT
- EASY OPENING STRAINER POT LID
- SALT WATER COMPATIBLE
- SELF-PRIMING



### Practical

A transparent lid leaves the strainer pot visible



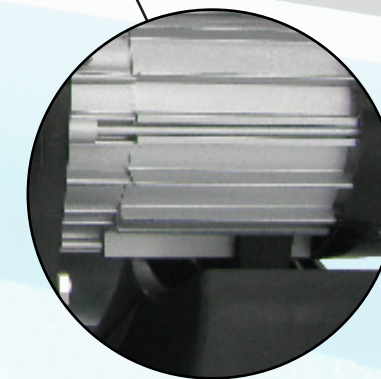
### Practical

Easy-to-open lid thanks to a wrench



### Practical

Easy repositioning of the strainer pot basket after cleaning



### Quiet

Motor mounted on silent blocks



### Quiet

Integrated baseplate mounted on silent blocks



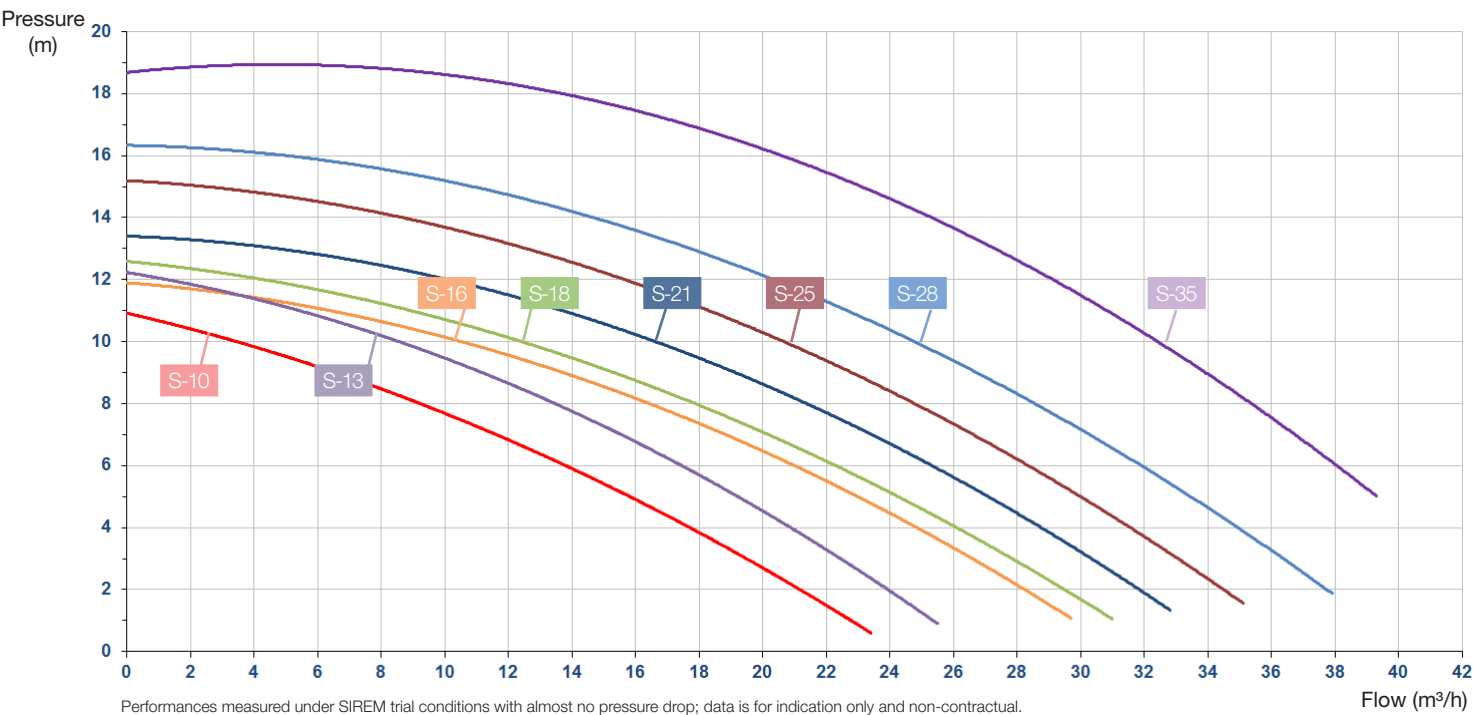
### Comes with :

- Ø 63 outer - Ø 50 inner slip connections
- Sealing o'rings
- 2"1/2 nuts



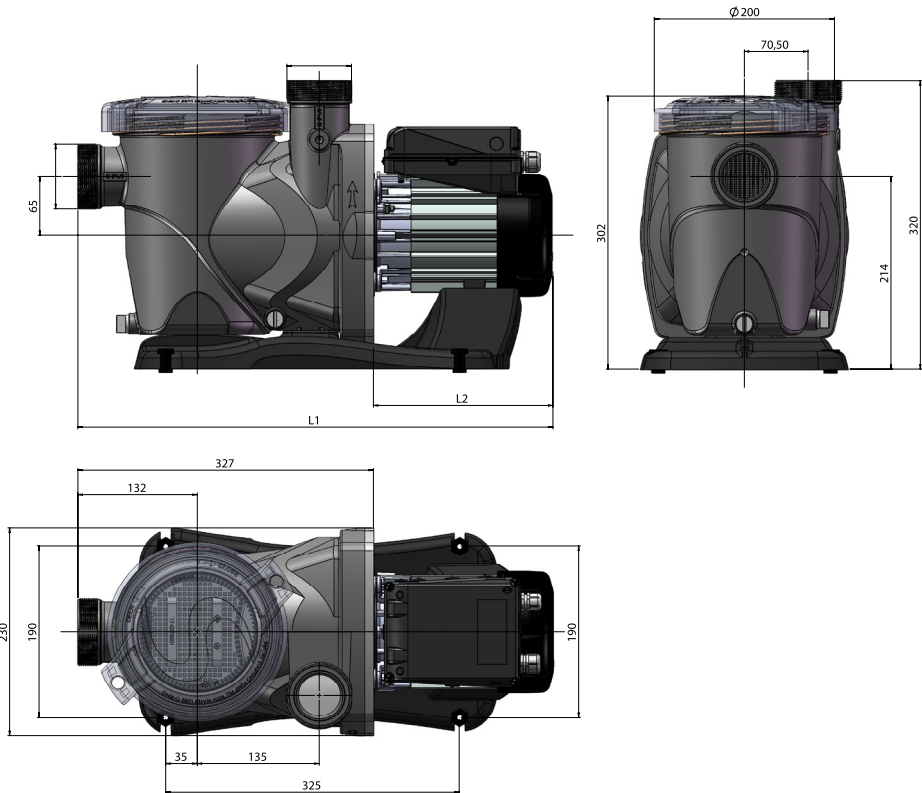
# Technical features

Single phase 1~ 230V - 50Hz	Three phase 3~ 230/400V 50Hz	I (A)		P1 (kw)		P2 1~/3~		C (μF) 1~	Q max (m³/h)	H max (m)	Efficiency at 0.8 bar	Protection class	Insulation class
		1~	3~	1~	3~	kW	hp						
S-10M	S-10T	3.3	2.6/1.5	0.7	0.7	0.6	0.8	14	24	11.0	33.8%	IP55	F
S-13M	S-13T	3.8	2.8/1.6	0.8	0.8	0.6	0.8	14	27	12.4	36.4%		
S-16M	S-16T	4.1	2.9/1.7	0.9	0.9	0.6	0.8	14	30	11.7	39.5%		
S-18M	S-18T	4.6	3.6/2.1	1.0	1.0	0.8	1.1	18	32	12.8	43.3%		
S-21M	S-21T	5.2	3.8/2.2	1.15	1.1	0.8	1.1	18	33	13.7	43.3%		
S-25M	S-25T	5.8	4.1/3.5	1.3	1.25	1.1	1.5	20	34.5	15.0	43.0%		
S-28M	S-28T	7.6	4.9/2.8	1.7	1.5	1.3	1.7	40	37.5	17.4	44.7%		
S-35M	S-35T	9.8	6.3/3.6	2.2	2.1	1.85	2.5	50	40	18.4	48.2%		



# Dimensions :

	L1 (mm)	L2 (mm)	Weight (Kg)
S SERIES S-10M S SERIES S-10T	511	181	12.0
S SERIES S-13M S SERIES S-13T	511	181	12.0
S SERIES S-16M S SERIES S-16T	511	181	12.0
S SERIES S-18M S SERIES S-18T	526	196	12.8
S SERIES S-21M S SERIES S-21T	526	196	12.8
S SERIES S-25M S SERIES S-25T	548	218	13.8
S SERIES S-28M S SERIES S-28T	567	239	17.0
S SERIES S-35M S SERIES S-35T	587	259	18.8
	567	239	17.0



# How to choose a pump ?

The filter pump for your pool should be selected according to the volume of water to be filtered; remember that the entire volume of water in the pool should be filtered 4 times a day.

The table below shows the appropriate pump filter rate to help you choose the right S SERIES single phase or three phase pump for your needs :

Volume of water in your pool	Appropriate flow at pressure of 0.8 bar (8m CE)	Appropriate S SERIES single phase model	Appropriate S SERIES three phase model
60 m <sup>3</sup>	10.0 m <sup>3</sup> /h	S-10M	S-10T
80 m <sup>3</sup>	13.0 m <sup>3</sup> /h	S-13M	S-13T
100 m <sup>3</sup>	16.5 m <sup>3</sup> /h	S-16M	S-16T
110 m <sup>3</sup>	18.0 m <sup>3</sup> /h	S-18M	S-18T
130 m <sup>3</sup>	21.5 m <sup>3</sup> /h	S-21M	S-21T
150 m <sup>3</sup>	25.0 m <sup>3</sup> /h	S-25M	S-25T
170 m <sup>3</sup>	28.5 m <sup>3</sup> /h	S-28M	S-28T
210 m <sup>3</sup>	35.5 m <sup>3</sup> /h	S-35M	S-35T

## Performance and energy consumption :

Single phase version 230V -50Hz	Three phase version 230/400V - 50Hz	Flow at 0.8 bar	Single phase 230V and three phase 230V/400V power	Energy consumption at 0.8 bar
S SERIES S-10M	S SERIES S-10T	10.0 m <sup>3</sup> /h	0.8 hp	610 Wh
S SERIES S-13M	S SERIES S-13T	13.0 m <sup>3</sup> /h	0.8 hp	730 Wh
S SERIES S-16M	S SERIES S-16T	16.5 m <sup>3</sup> /h	0.8 hp	880 Wh
S SERIES S-18M	S SERIES S-18T	18.0 m <sup>3</sup> /h	1.1 hp	990 Wh
S SERIES S-21M	S SERIES S-21T	21.5 m <sup>3</sup> /h	1.1 hp	1080 Wh
S SERIES S-25M	S SERIES S-25T	25.0 m <sup>3</sup> /h	1.5 hp	1240 Wh
S SERIES S-28M	S SERIES S-28T	28.5 m <sup>3</sup> /h	1.7 hp	1520 Wh
S SERIES S-35M	S SERIES S-35T	35.5 m <sup>3</sup> /h	2.5 hp	2220 Wh

Your retailer :



Chemin du Pilon - 01700 Saint Maurice de Beynost - FRANCE  
Tél. +33 (0)4 78 55 83 00 - Fax. +33(0)4 78 55 53 19  
[www.sirem.fr](http://www.sirem.fr) - [info@sirem.fr](mailto:info@sirem.fr)

